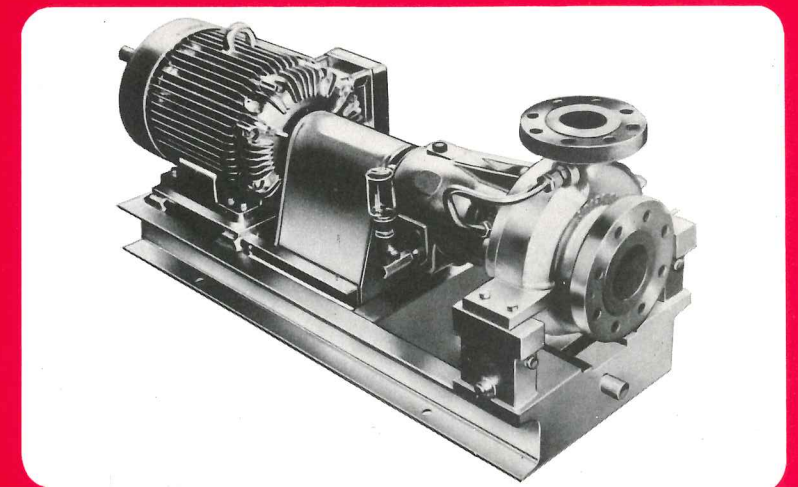


# Hayward Tyler

**SCM RANGE**  
of process pumps



# SCM RANGE

of process pumps  
fully meets API 610-6th edition

The Hayward Tyler SCM range of process pumps is now available from our plant at East Kilbride, Scotland. Manufactured for many years by our Italian factory, the SCM joins our family of quality products available from the UK.

The SCM is an end suction, horizontal, centre line supported pump range, in compliance with API 610 - 6th edition.

In operation throughout the world, the SCM is a proven reliable product, equal to the strenuous production demands of the world's industries.

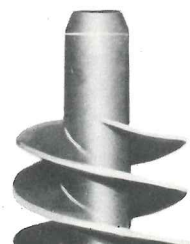
A short pump shaft ensures a compact unit with critical speeds well above the maximum operating speeds. Four shaft assemblies cover the entire range, keeping spares inventory to a minimum.

For high temperature applications cooling can be applied to the stuffing box, bearing housings and pedestals.

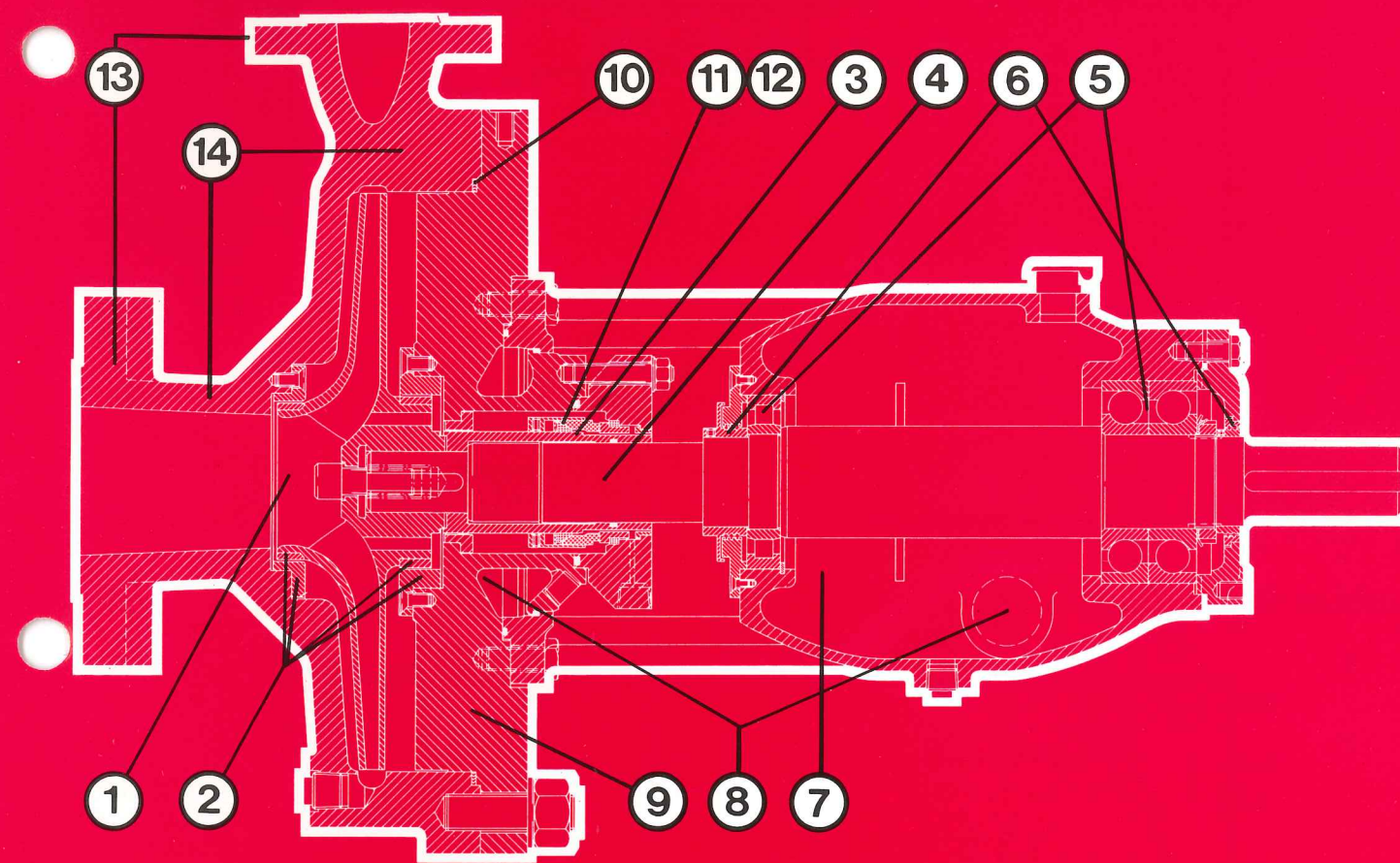
Available in cast steel or stainless steel, all units can accommodate a variety of mechanical seals.

The back pull-out construction facilitated by the use of a spacer coupling between pump and driver, allows removal of the rotating assembly without disturbing the suction or discharge pipework.

Designed for either 20 or 40 bar pressure ratings, the SCM in standard form is both competitive and available.



For applications where the nett positive suction head required (NPSHR) by the pump is close to or greater than the nett positive suction head available (NPSHA) to the pump, then a range of inducers is available to assist the suction characteristics of the pumps.



- 1 Impellers** Shrouded for high efficiency, and designed to give the best hydraulic performance. Balanced as required by API 610.
- 2 Wear Rings** Faces 'Stellited' when necessary, and secured by screws. Easily renewable.
- 3 Shaft Sleeves** Sealed against leakage and hard surfaced or 'Stellited' when necessary.
- 4 Shafts** Four sizes only covering the pump range. First critical speed well above maximum operating speed. Alloy or stainless steel, whichever is required for the application.
- 5 Bearings** The radial and angular contact thrust bearings are selected to give bearing lives above API 610 requirements. The back-to-back angular contact bearings do not require to be paired; any two can be used together.
- 6 Seals** Prevent contamination of bearings by liquid or solid impurities and leakage of oil from the bearing housing. (Labyrinth or V-ring option).
- 7 Lubrication** Oil circulation is by a flinger. The correct level is maintained by a constant level oiler.
- 8 Cooling** Can be provided to bearing housing, stuffing box and pedestals when pumping temperature demands.
- 9 Back Pull Out Design** Allows complete rotating unit and stuffing box to be removed with no disturbance of pipe work or pump and driver alignment.
- 10 Case Gasket** Captive between pump case and stuffing box cover, conforming to API 610.
- 11 Seal** Mechanical seals of various types can be fitted to suit the pumping application.
- 12 Seal** 6 rings of soft packing with lantern ring can be fitted.
- 13 Flanges** ASA150RF or ASA300RF options.
- 14 Branches** End suction and top centre-line discharge configuration.